

CCS Technical Documentation

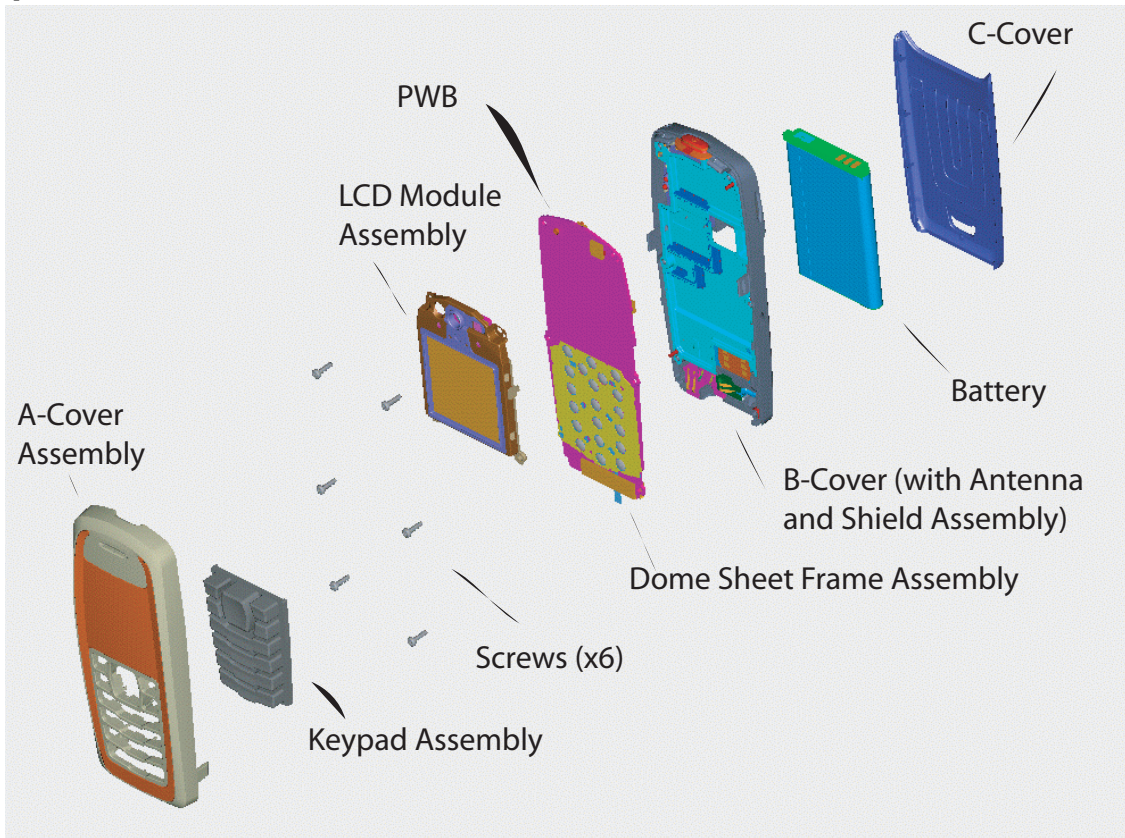
RH-48 Series Transceivers

Parts Lists

Contents

	Page No
Exploded View.....	3
Assembly Parts of Basic Transceiver RH-48	3
Component Layout — Top	5
Component Layout — Bottom	6
Component Values — Top	7
Component Values — Bottom	8
Parts List	9
RH-48 (3105) — Code: 0202161	9

Exploded View

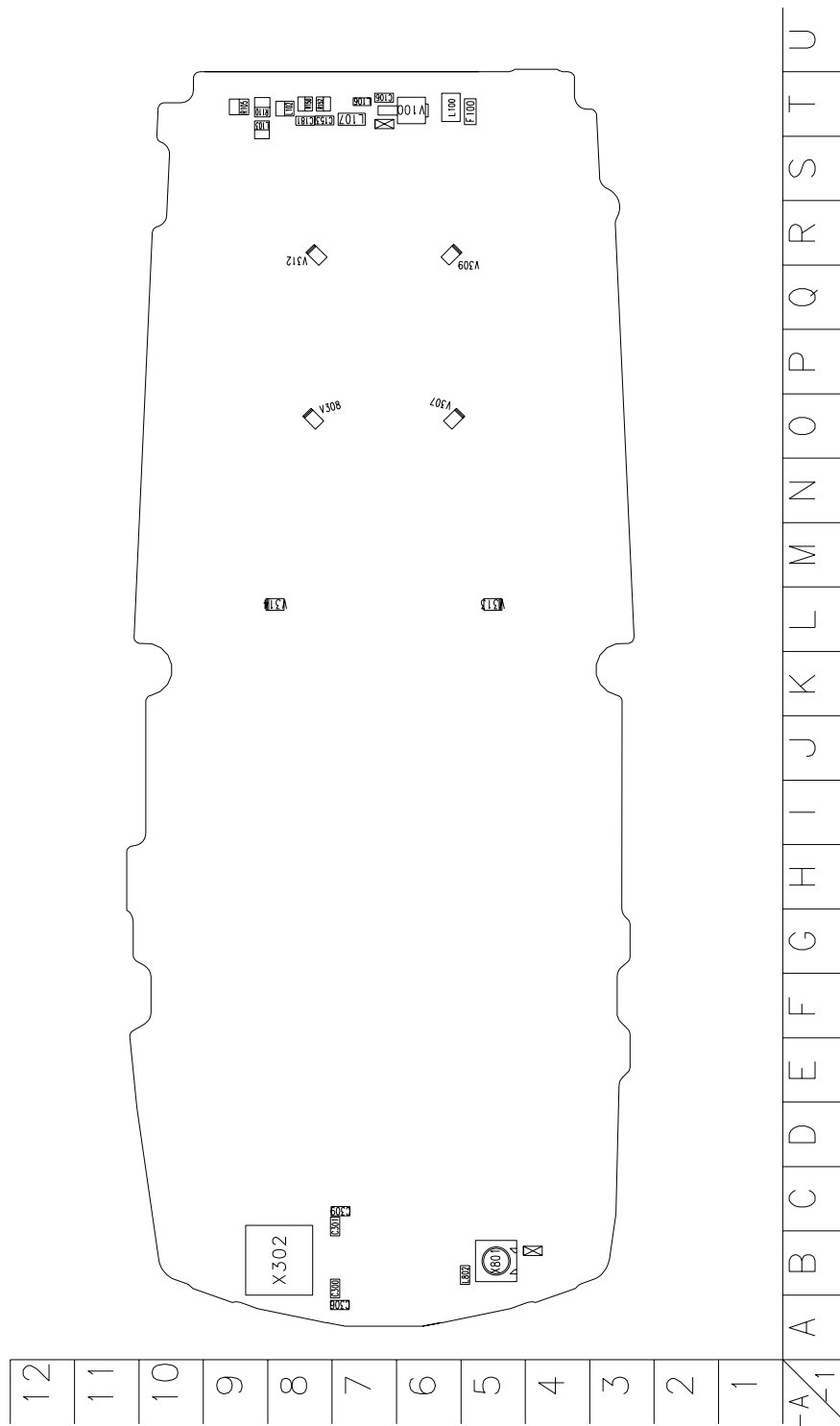


Assembly Parts of Basic Transceiver RH-48

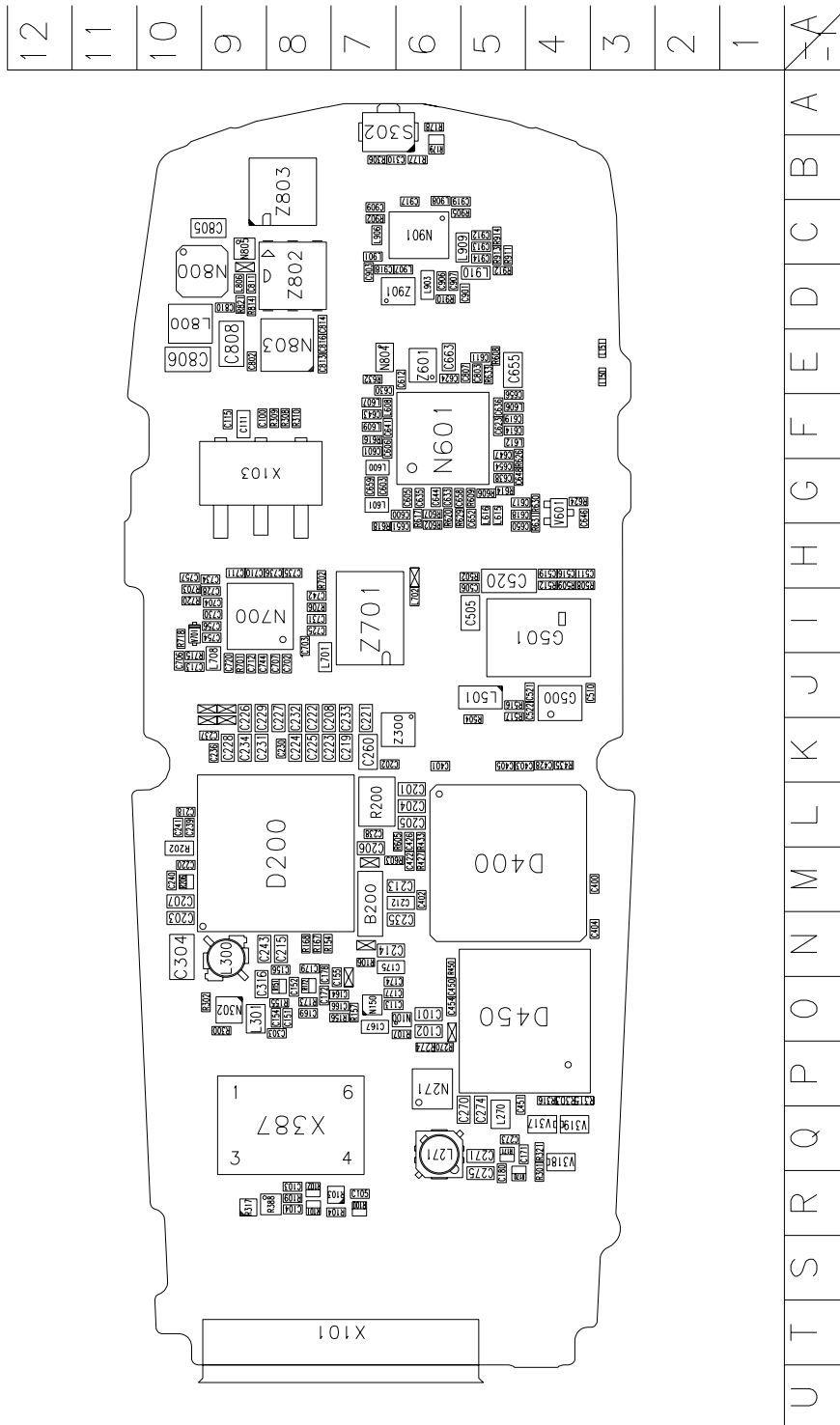
Qty	Code	Description
1	9491707 9491706 9491708 9491713	A-Cover Assembly Graphite DMC06987 Light Grey DMC06987 Bright Blue DMC06987 Fun Fuchsia DMC06987
1	9791124 9791427 9791132 9791130 9791125	Keypad Assembly Latin DMC06505 Thai DMC07962 Hindi DMC06513 Stroke DMC06511 BOPOMOFO DMC06506
6	6290119	Screws 1.8X6 RF T6+BLK DMD06930
1	9498012	LCD Module Assembly DMC06922
1	0202161	PWB
1	9481160	Dome Sheet Frame Assembly
1	9491626	B-Cover Assembly (with Antenna and Shield Assembly) DMC06814 Dark Grey

Qty	Code	Description
1	0670400	Battery (BL-5C)
1	9459321 9459316 9459317 9459460	C-Cover Graphite DMC07013 Light Grey DMC07013 Brt Blue DMC07013 Fuchsia DMC07013
1	9453375	C-Cover rel button DMD10535 Dark Grey
1	9510935	C-Cover rel spring DMD08481
1	9453340	B-Cover DMD11183 Blank
1	5140265	Mic Mod+Holder Tomahawk -42+-3DB
1	5400243	Conn DC-Jack 3.5mm 3POL SPR 90DEG
1	6800057	Vibra 1.3V 80MA
1	9453374	Power Button DMD10533 Dark Grey
1	9497263	D-Cover Assy DMC05545 HDDA2
1	0660303	Antenna Int. Ant. Assy
1	9517369	Shielding Assy DMC07076
1	9560199	SIM flap DMD08487
1	9481194	Conductive sticker
1	9381480	RUIM sticker (Australia only)

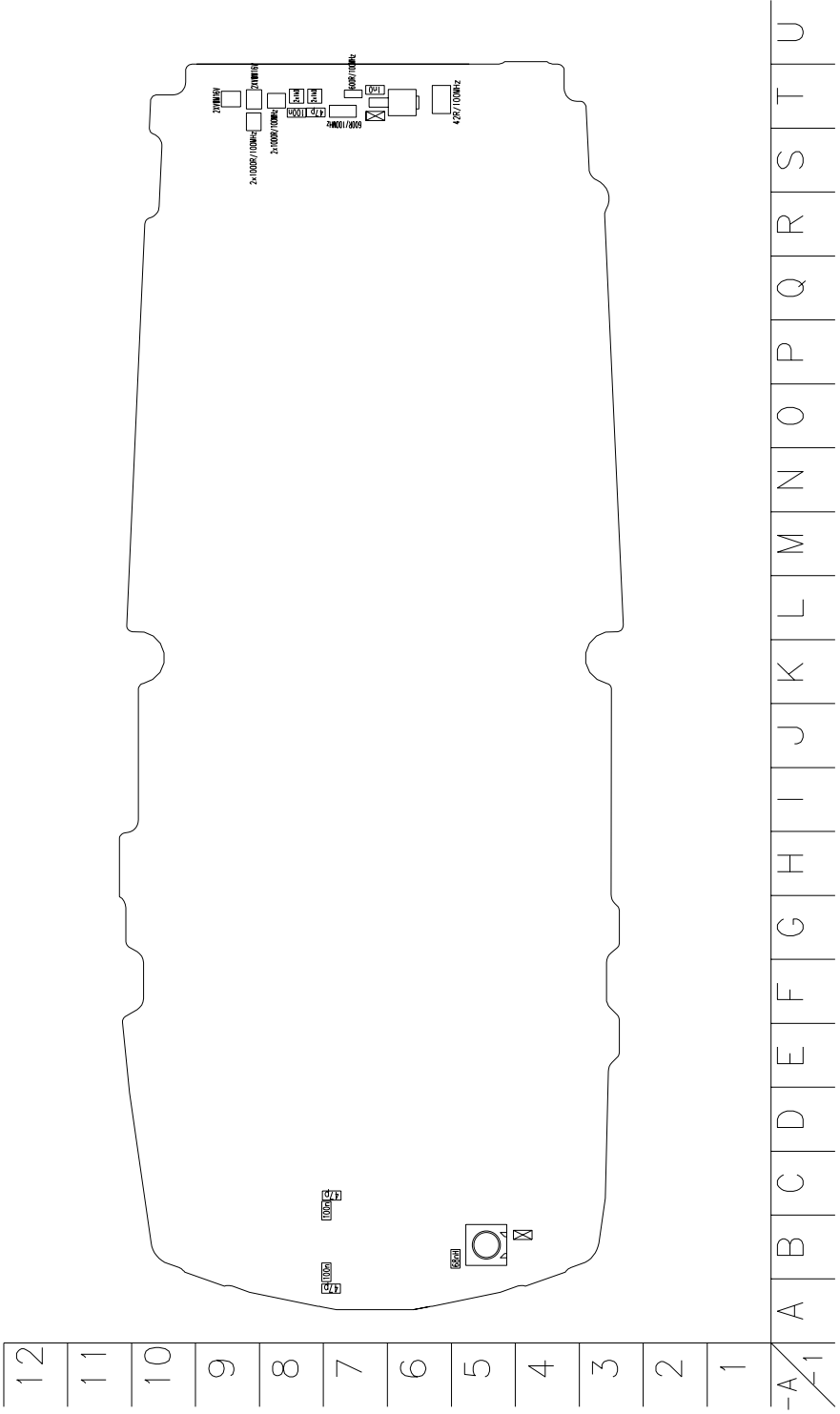
Component Layout – Top



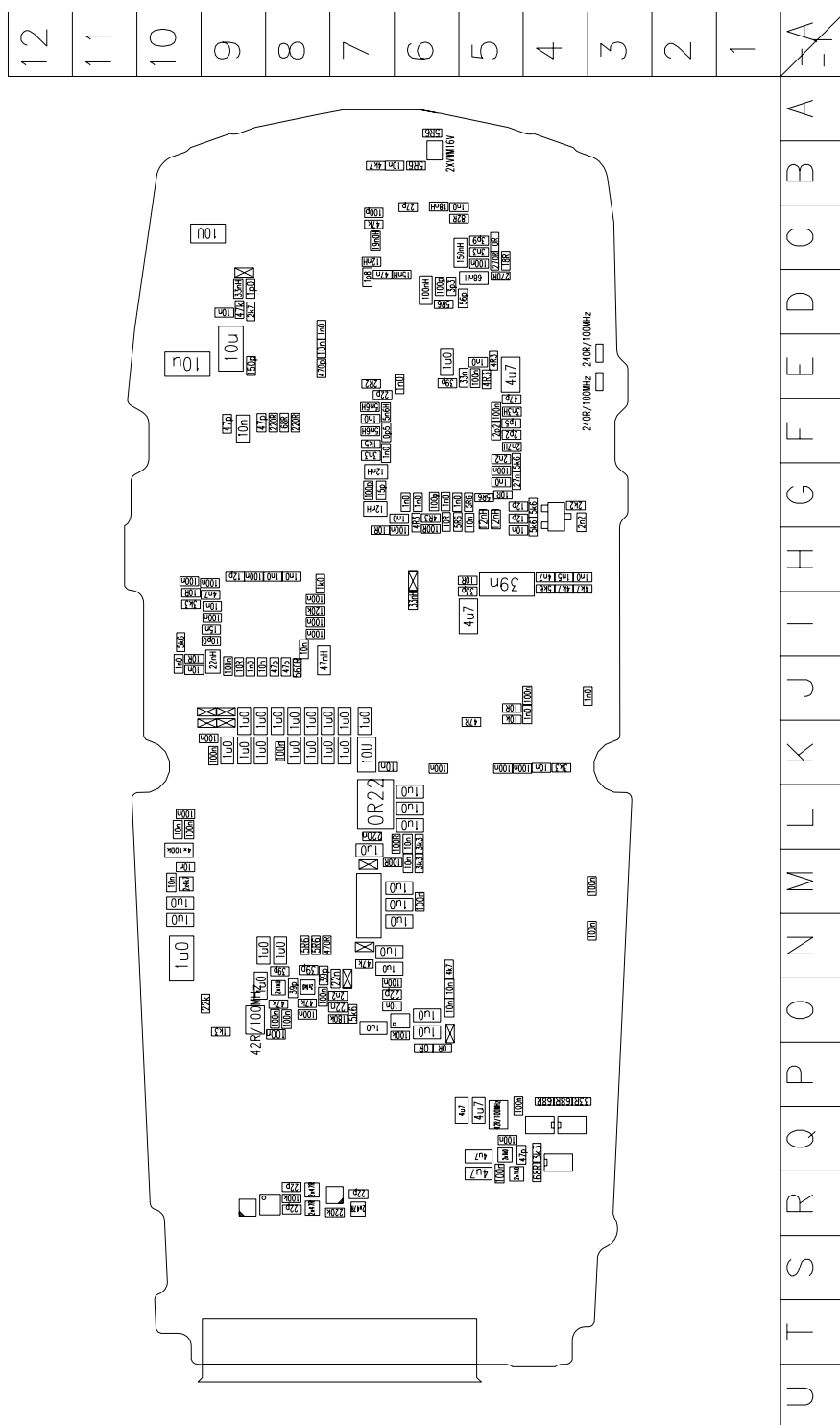
Component Layout – Bottom



Component Values – Top



Component Values – Bottom



Parts List

RH-48 (3105) – Code: 0202161

Item	Code	Side	X	Y	Description	Value	Type
R100	1620027	Bottom	R	7	res network	0W06 2X47R J	0404
R101	1620027	Bottom	R	8	res network	0W06 2X47R J	0404
R102	1620027	Bottom	R	8	res network	0W06 2X47R J	0404
R103	4120011	Bottom	R	7	ZDIX4 IP4043CX5 CA	14V2 10W	CSP5
R104	1430812	Bottom	R	7	chip res	0W06 220K J	0402
R105	1825031	Top	T	9	varistor array	2XVWM16V VC50	0405
R106	1820039	Bottom	Q	6	NTC res 0W1	47K J B 4050+-3%	0402
R107	1430804	Bottom	Q	6	chip res	0W06 100K J	0402
R109	1430804	Bottom	R	8	chip res	0W06 100K J	0402
R110	1825031	Top	T	9	varistor array	2XVWM16V VC50	0405
R150	1620031	Top	T	8	res network	0W06 2X1K0 J	0404
R151	1620031	Bottom	O	8	res network	0W06 2X1K0 J	0404
R152	1620031	Top	T	8	res network	0W06 2X1K0 J	0404
R154	1430744	Bottom	N	8	chip res	0W06 470R J	0402
R155	1430796	Bottom	O	8	chip res	0W06 47K J	0402
R156	1430191	Bottom	O	7	chip res	0W06 180K F 200PPM	0402
R157	1430772	Bottom	O	7	chip res	0W06 5K6 J	0402
R167	1430693	Bottom	N	8	chip res	0W06 5R6 J	0402
R168	1430693	Bottom	N	8	chip res	0W06 5R6 J	0402
R170	1620031	Bottom	Q	6	res network	0W06 2X1K0 J	0404
R171	1620031	Bottom	Q	6	res network	0W06 2X1K0 J	0404
R172	1620031	Bottom	O	8	res network	0W06 2X1K0 J	0404
R173	1430796	Bottom	O	8	chip res	0W06 47K J	0402
R177	1430693	Bottom	B	6	chip res	0W06 5R6 J	0402
R178	1430693	Bottom	A	6	chip res	0W06 5R6 J	0402
R179	1825031	Bottom	B	6	varistor array	2XVWM16V VC50	0405
R200	1419003	Bottom	L	7	chip res	0W5 OR22 J 200PPM	1210
R202	1620067	Bottom	M	10	res network	0W06 4X100K J	0804
R206	1620029	Bottom	M	10	res network	0W06 2X4K7 J	0404

Item	Code	Side	X	Y	Description	Value	Type
R270	1430690	Bottom	Q	5	chip res jumper	OR0	0402
R274	1430690	Bottom	Q	5	chip res jumper	OR0	0402
R300	1430915	Bottom	O	9	chip res	OW06 1K3 F 250PPM	0402
R301	1430722	Bottom	P	6	chip res	OW06 68R J	0402
R302	1430121	Bottom	O	9	chip res	OW06 22K F 200PPM	0402
R303	1430722	Bottom	O	6	chip res	OW06 68R J	0402
R306	1430770	Bottom	B	7	chip res	OW06 4K7 J	0402
R308	1430722	Bottom	F	8	chip res	OW06 68R J	0402
R309	1430734	Bottom	F	8	chip res	OW06 220R J	0402
R310	1430734	Bottom	F	8	chip res	OW06 220R J	0402
R315	1430714	Bottom	O	6	chip res	OW06 33R J	0402
R316	1430722	Bottom	P	6	chip res	OW06 68R J	0402
R317	4120011	Bottom	R	9	ZDIX4 IP4043CX5 CA	14V2 10W	CSP5
R321	1430764	Bottom	P	6	chip res	OW06 3K3 J	0402
R388	4120071	Bottom	R	8	ASIP EMIF03-SIM01	Sim Filter	BGA8
R427	1430764	Bottom	M	6	chip res	OW06 3K3 J	0402
R433	1430764	Bottom	L	6	chip res	OW06 3K3 J	0402
R435	1430764	Bottom	K	4	chip res	OW06 3K3 J	0402
R450	1430770	Bottom	N	6	chip res	OW06 4K7 J	0402
R502	1430700	Bottom	H	5	chip res	OW06 10R J	0402
R504	1430718	Bottom	K	5	chip res	OW06 47R J	0402
R508	1430770	Bottom	H	4	chip res	OW06 4K7 J	0402
R509	1430770	Bottom	H	4	chip res	OW06 4K7 J	0402
R512	1430772	Bottom	H	4	chip res	OW06 5K6 J	0402
R516	1430700	Bottom	J	5	chip res	OW06 10R J	0402
R517	1430778	Bottom	J	5	chip res	OW06 10K J	0402
R602	1430726	Bottom	H	6	chip res	OW06 100R J	0402
R603	1430726	Bottom	M	7	chip res	OW06 100R J	0402
R605	1430726	Bottom	L	6	chip res	OW06 100R J	0402
R606	1430693	Bottom	G	5	chip res	OW06 5R6 J	0402
R607	1430681	Bottom	G	6	chip res	OW06 4R3 J	0402
R608	1430681	Bottom	E	5	chip res	OW06 4R3 J	0402

Item	Code	Side	X	Y	Description	Value	Type
R609	1430693	Bottom	G	5	chip res	0W06 5R6 J	0402
R614	1430700	Bottom	G	5	chip res	0W06 10R J	0402
R616	1430758	Bottom	F	7	chip res	0W06 1K5 J	0402
R617	1430681	Bottom	G	6	chip res	0W06 4R3 J	0402
R618	1430700	Bottom	H	7	chip res	0W06 10R J	0402
R620	1430700	Bottom	G	6	chip res	0W06 10R J	0402
R624	1430762	Bottom	G	4	chip res	0W06 2K2 J	0402
R626	1430772	Bottom	G	5	chip res	0W06 5K6 J	0402
R629	1430693	Bottom	G	6	chip res	0W06 5R6 J	0402
R630	1430772	Bottom	G	4	chip res	0W06 5K6 J	0402
R631	1430772	Bottom	G	4	chip res	0W06 5K6 J	0402
R632	1430691	Bottom	E	7	chip res	0W06 2R2 J	0402
R633	1430681	Bottom	E	5	chip res	0W06 4R3 J	0402
R701	1430700	Bottom	J	9	chip res	0W06 10R J	0402
R702	1430754	Bottom	H	8	chip res	0W06 1K0 J	0402
R703	1430700	Bottom	I	10	chip res	0W06 10R J	0402
R706	1430806	Bottom	I	8	chip res	0W06 120K J	0402
R715	1430700	Bottom	J	9	chip res	0W06 10R J	0402
R718	1430772	Bottom	I	10	chip res	0W06 5K6 J	0402
R720	1430764	Bottom	I	10	chip res	0W06 3K3 J	0402
R814	1430832	Bottom	D	9	chip res	0W06 2K7 J	0402
R821	1820039	Bottom	D	9	NTC res 0W1	47K J B 4050+-3%	0402
R902	1430796	Bottom	C	7	chip res	0W06 47K J	0402
R905	1430724	Bottom	C	5	chip res	0W06 82R J	0402
R910	1430693	Bottom	D	6	chip res	0W06 5R6 J	0402
R911	1430708	Bottom	C	5	chip res	0W06 18R J	0402
R912	1430738	Bottom	D	5	chip res	0W06 270R J	0402
R913	1430738	Bottom	C	5	chip res	0W06 270R J	0402
R914	1430690	Bottom	C	5	chip res jumper	0R0	0402
C100	2320552	Bottom	F	9	chip cap NPO	47P J 50V	0402
C101	2320481	Bottom	Q	6	chip cap X5R	1U K 6V3	0603
C102	2320481	Bottom	Q	6	chip cap X5R	1U K 6V3	0603

Item	Code	Side	X	Y	Description	Value	Type
C103	2320544	Bottom	R	8	chip cap NPO	22P J 50V	0402
C104	2320544	Bottom	R	8	chip cap NPO	22P J 50V	0402
C105	2320544	Bottom	R	7	chip cap NPO	22P J 50V	0402
C106	2320584	Top	T	7	chip cap X7R	1N0 J 50V	0402
C111	2320110	Bottom	F	9	chip cap X7R	10N K 50V	0603
C113	2320778	Bottom	Q	6	chip cap X7R	10N K 16V	0402
C115	2320552	Bottom	F	9	chip cap NPO	47P J 50V	0402
C151	2320805	Bottom	O	8	chip cap X5R	100N K 10V	0402
C152	2320550	Bottom	O	8	chip cap NPO	39P J 50V	0402
C153	2320552	Top	T	8	chip cap NPO	47P J 50V	0402
C154	2320805	Bottom	O	8	chip cap X5R	100N K 10V	0402
C155	2321007	Bottom	O	7	chip cap X7R	22N K 16V	0402
C156	2320550	Bottom	N	8	chip cap NPO	39P J 50V	0402
C164	2320592	Bottom	O	7	chip cap X7R	2N2 J 50V	0402
C166	2321007	Bottom	O	7	chip cap X7R	22N K 16V	0402
C167	2320481	Bottom	O	7	chip cap X5R	1U K 6V3	0603
C169	2320805	Bottom	O	8	chip cap X5R	100N K 10V	0402
C171	2320552	Bottom	Q	6	chip cap NPO	47P J 50V	0402
C172	2320805	Bottom	O	8	chip cap X5R	100N K 10V	0402
C174	2320805	Bottom	O	7	chip cap X5R	100N K 10V	0402
C175	2320481	Bottom	N	7	chip cap X5R	1U K 6V3	0603
C177	2320544	Bottom	O	7	chip cap NPO	22P J 50V	0402
C178	2320550	Bottom	N	8	chip cap NPO	39P J 50V	0402
C179	2320550	Bottom	N	8	chip cap NPO	39P J 50V	0402
C180	2320805	Bottom	R	6	chip cap X5R	100N K 10V	0402
C181	2320805	Top	T	8	chip cap X5R	100N K 10V	0402
C201	2320481	Bottom	L	6	chip cap X5R	1U K 6V3	0603
C202	2320778	Bottom	K	7	chip cap X7R	10N K 16V	0402
C203	2320481	Bottom	N	10	chip cap X5R	1U K 6V3	0603
C204	2320481	Bottom	L	6	chip cap X5R	1U K 6V3	0603
C205	2320481	Bottom	L	6	chip cap X5R	1U K 6V3	0603
C206	2320481	Bottom	M	7	chip cap X5R	1U K 6V3	0603

Item	Code	Side	X	Y	Description	Value	Type
C207	2320481	Bottom	M	10	chip cap X5R	1U K 6V3	0603
C208	2320481	Bottom	K	8	chip cap X5R	1U K 6V3	0603
C212	2320481	Bottom	M	6	chip cap X5R	1U K 6V3	0603
C213	2320481	Bottom	M	6	chip cap X5R	1U K 6V3	0603
C214	2320481	Bottom	N	7	chip cap X5R	1U K 6V3	0603
C215	2320481	Bottom	N	8	chip cap X5R	1U K 6V3	0603
C218	2320805	Bottom	L	10	chip cap X5R	100N K 10V	0402
C219	2320481	Bottom	K	7	chip cap X5R	1U K 6V3	0603
C220	2320778	Bottom	M	10	chip cap X7R	10N K 16V	0402
C221	2320481	Bottom	K	7	chip cap X5R	1U K 6V3	0603
C222	2320481	Bottom	K	8	chip cap X5R	1U K 6V3	0603
C223	2320481	Bottom	K	8	chip cap X5R	1U K 6V3	0603
C224	2320481	Bottom	K	8	chip cap X5R	1U K 6V3	0603
C225	2320481	Bottom	K	8	chip cap X5R	1U K 6V3	0603
C226	2320481	Bottom	K	9	chip cap X5R	1U K 6V3	0603
C227	2320481	Bottom	K	8	chip cap X5R	1U K 6V3	0603
C228	2320481	Bottom	K	9	chip cap X5R	1U K 6V3	0603
C229	2320481	Bottom	K	9	chip cap X5R	1U K 6V3	0603
C230	2320805	Bottom	K	8	chip cap X5R	100N K 10V	0402
C231	2320481	Bottom	K	9	chip cap X5R	1U K 6V3	0603
C232	2320481	Bottom	K	8	chip cap X5R	1U K 6V3	0603
C233	2320481	Bottom	K	7	chip cap X5R	1U K 6V3	0603
C234	2320481	Bottom	K	9	chip cap X5R	1U K 6V3	0603
C235	2320481	Bottom	N	6	chip cap X5R	1U K 6V3	0603
C236	2320805	Bottom	K	9	chip cap X5R	100N K 10V	0402
C237	2320805	Bottom	K	9	chip cap X5R	100N K 10V	0402
C238	2320143	Bottom	L	7	chip cap X5R	220N K 6.3V	0402
C239	2320805	Bottom	L	10	chip cap X5R	100N K 10V	0402
C240	2320778	Bottom	M	10	chip cap X7R	10N K 16V	0402
C241	2320778	Bottom	L	10	chip cap X7R	10N K 16V	0402
C243	2320481	Bottom	N	9	chip cap X5R	1U K 6V3	0603
C260	2310037	Bottom	K	7	chip cap X5R	10U M 6V3	0805

Item	Code	Side	X	Y	Description	Value	Type
C270	2320505	Bottom	Q	5	chip cap X5R	4U7 K 6.3V	0603
C271	2320505	Bottom	Q	4	chip cap X5R	4U7 K 6.3V	0603
C273	2320805	Bottom	Q	5	chip cap X5R	100N K 10V	0402
C274	2320505	Bottom	Q	5	chip cap X5R	4U7 K 6.3V	0603
C275	2320505	Bottom	R	4	chip cap X5R	4U7 K 6.3V	0603
C300	2320805	Top	B	7	chip cap X5R	100N K 10V	0402
C301	2320805	Top	C	7	chip cap X5R	100N K 10V	0402
C303	2320805	Bottom	O	8	chip cap X5R	100N K 10V	0402
C304	2312411	Bottom	N	10	chip cap X5R	1U0 M 25V	1206
C306	2320552	Top	A	7	chip cap NPO	47P J 50V	0402
C309	2320552	Top	C	7	chip cap NPO	47P J 50V	0402
C310	2320778	Bottom	B	6	chip cap X7R	10N K 16V	0402
C316	2320481	Bottom	O	9	chip cap X5R	1U K 6V3	0603
C400	2320805	Bottom	M	3	chip cap X5R	100N K 10V	0402
C401	2320805	Bottom	K	6	chip cap X5R	100N K 10V	0402
C402	2320805	Bottom	M	6	chip cap X5R	100N K 10V	0402
C403	2320805	Bottom	K	5	chip cap X5R	100N K 10V	0402
C404	2320805	Bottom	N	3	chip cap X5R	100N K 10V	0402
C405	2320805	Bottom	K	5	chip cap X5R	100N K 10V	0402
C422	2320778	Bottom	M	6	chip cap X7R	10N K 16V	0402
C426	2320778	Bottom	L	6	chip cap X7R	10N K 16V	0402
C428	2320778	Bottom	K	4	chip cap X7R	10N K 16V	0402
C450	2320778	Bottom	O	6	chip cap X7R	10N K 16V	0402
C451	2320805	Bottom	P	5	chip cap X5R	100N K 10V	0402
C454	2320778	Bottom	O	6	chip cap X7R	10N K 16V	0402
C505	2312243	Bottom	I	5	chip cap X5R	4U7 K 6V3	0805
C506	2320548	Bottom	I	5	chip cap NPO	33P J 50V	0402
C510	2320584	Bottom	J	3	chip cap X7R	1N0 J 50V	0402
C511	2320584	Bottom	H	4	chip cap X7R	1N0 J 50V	0402
C516	2320588	Bottom	H	4	chip cap X7R	1N5 J 50V	0402
C519	2320618	Bottom	H	4	chip cap X7R	4N7 J 25V	0402
C520	2420029	Bottom	H	5	chip cap PPS	39N G 16V	1206

Item	Code	Side	X	Y	Description	Value	Type
C521	2320805	Bottom	J	4	chip cap X5R	100N K 10V	0402
C522	2320584	Bottom	J	4	chip cap X7R	1N0 J 50V	0402
C600	2320584	Bottom	G	6	chip cap X7R	1N0 J 50V	0402
C601	2320596	Bottom	F	7	chip cap X7R	3N3 J 50V	0402
C603	2320540	Bottom	G	7	chip cap NPO	15P J 50V	0402
C605	2320584	Bottom	G	6	chip cap X7R	1N0 J 50V	0402
C606	2320584	Bottom	F	7	chip cap X7R	1N0 J 50V	0402
C611	2320584	Bottom	E	5	chip cap X7R	1N0 J 50V	0402
C612	2320584	Bottom	E	6	chip cap X7R	1N0 J 50V	0402
C614	2320520	Bottom	F	5	chip cap NPO	2P2 C 50V	0402
C617	2320538	Bottom	G	5	chip cap NPO	12P J 50V	0402
C618	2320538	Bottom	G	5	chip cap NPO	12P J 50V	0402
C619	2320516	Bottom	F	5	chip cap NPO	1P5 C 50V	0402
C623	2320520	Bottom	F	5	chip cap NPO	2P2 C 50V	0402
C624	2320550	Bottom	F	5	chip cap NPO	39P J 50V	0402
C630	2320544	Bottom	E	7	chip cap NPO	22P J 50V	0402
C633	2320584	Bottom	G	6	chip cap X7R	1N0 J 50V	0402
C635	2320584	Bottom	G	6	chip cap X7R	1N0 J 50V	0402
C636	2320805	Bottom	G	5	chip cap X5R	100N K 10V	0402
C638	2320584	Bottom	G	5	chip cap X7R	1N0 J 50V	0402
C641	2320621	Bottom	F	7	chip cap NPO	0P5 C 50V	0402
C643	2320584	Bottom	F	7	chip cap X7R	1N0 J 50V	0402
C644	2320560	Bottom	G	6	chip cap NPO	100P J 50V	0402
C646	2320592	Bottom	G	4	chip cap X7R	2N2 J 50V	0402
C647	2320592	Bottom	F	5	chip cap X7R	2N2 J 50V	0402
C648	2320771	Bottom	G	5	chip cap X5R	27N K 10V	0402
C650	2320778	Bottom	H	5	chip cap X7R	10N K 16V	0402
C651	2320805	Bottom	H	6	chip cap X5R	100N K 10V	0402
C652	2320778	Bottom	G	5	chip cap X7R	10N K 16V	0402
C654	2320805	Bottom	G	5	chip cap X5R	100N K 10V	0402
C655	2312243	Bottom	E	5	chip cap X5R	4U7 K 6V3	0805
C656	2320552	Bottom	F	5	chip cap NPO	47P J 50V	0402

Item	Code	Side	X	Y	Description	Value	Type
C658	2320584	Bottom	G	6	chip cap X7R	1N0 J 50V	0402
C659	2320560	Bottom	G	7	chip cap NPO	100P J 50V	0402
C663	2320481	Bottom	E	6	chip cap X5R	1U K 6V3	0603
C702	2320526	Bottom	J	8	chip cap NPO	3P9 C 50V	0402
C703	2320778	Bottom	I	8	chip cap X7R	10N K 16V	0402
C704	2320778	Bottom	I	9	chip cap X7R	10N K 16V	0402
C706	2320584	Bottom	J	10	chip cap X7R	1N0 J 50V	0402
C707	2320526	Bottom	J	8	chip cap NPO	3P9 C 50V	0402
C710	2320805	Bottom	H	9	chip cap X5R	100N K 10V	0402
C711	2320538	Bottom	H	9	chip cap NPO	12P J 50V	0402
C712	2320584	Bottom	J	9	chip cap X7R	1N0 J 50V	0402
C713	2320620	Bottom	J	10	chip cap X7R	10N J 16V	0402
C720	2320805	Bottom	J	9	chip cap X5R	100N K 10V	0402
C725	2320805	Bottom	I	8	chip cap X5R	100N K 10V	0402
C728	2320760	Bottom	I	9	chip cap X7R	4N7 K 25V	0402
C730	2320805	Bottom	I	9	chip cap X5R	100N K 10V	0402
C731	2320805	Bottom	I	8	chip cap X5R	100N K 10V	0402
C734	2320805	Bottom	H	9	chip cap X5R	100N K 10V	0402
C735	2320584	Bottom	H	8	chip cap X7R	1N0 J 50V	0402
C736	2320584	Bottom	H	8	chip cap X7R	1N0 J 50V	0402
C742	2320805	Bottom	I	8	chip cap X5R	100N K 10V	0402
C744	2320620	Bottom	J	9	chip cap X7R	10N J 16V	0402
C754	2320009	Bottom	I	9	chip cap NPO	10P J 50V	0402
C756	2320787	Bottom	I	9	chip cap X7R	15N K 16V	0402
C757	2320805	Bottom	H	10	chip cap X5R	100N K 10V	0402
C802	2320564	Bottom	E	9	chip cap NPO	150P J 50V	0402
C803	2320805	Bottom	E	5	chip cap X5R	100N K 10V	0402
C805	2310037	Bottom	C	9	chip cap X5R	10U M 6V3	0805
C806	2312255	Bottom	E	10	chip cap X5R	10U K 10V	1206
C807	2320783	Bottom	E	5	chip cap X7R	33N K 10V	0402
C808	2312255	Bottom	E	9	chip cap X5R	10U K 10V	1206
C810	2320778	Bottom	D	9	chip cap X7R	10N K 16V	0402

Item	Code	Side	X	Y	Description	Value	Type
C811	2320508	Bottom	D	9	chip cap NPO	1P0 C 50V	0402
C813	2320576	Bottom	E	8	chip cap X7R	470P J 50V	0402
C814	2320584	Bottom	D	8	chip cap X7R	1N0 J 50V	0402
C816	2320778	Bottom	E	8	chip cap X7R	10N K 16V	0402
C901	2320554	Bottom	D	5	chip cap NPO	56P J 50V	0402
C903	2320518	Bottom	D	7	chip cap NPO	1P8 C 50V	0402
C906	2320560	Bottom	D	6	chip cap NPO	100P J 50V	0402
C907	2320524	Bottom	D	6	chip cap NPO	3P3 C 50V	0402
C909	2320560	Bottom	C	7	chip cap NPO	100P J 50V	0402
C912	2320534	Bottom	C	5	chip cap NPO	8P2 C 50V	0402
C913	2320596	Bottom	C	5	chip cap X7R	3N3 J 50V	0402
C914	2320805	Bottom	C	5	chip cap X5R	100N K 10V	0402
C917	2320546	Bottom	C	6	chip cap NPO	27P J 50V	0402
C918	2320785	Bottom	D	7	chip cap X7R	47N K 10V	0402
C919	2320584	Bottom	C	5	chip cap X7R	1N0 J 50V	0402
L100	3203705	Top	T	6	ferrite bead	0.015R 42R/100M	0805
L102	3203801	Top	T	8	chip bead array	2X1000R	0405
L103	3203801	Top	T	9	chip bead array	2X1000R	0405
L106	3203725	Top	T	7	ferrite bead	600R/100MHz	0402
L107	3203741	Top	T	7	ferrite bead	0R5 600R/100MHz	0603
L150	3203767	Bottom	E	3	ferrite bead	240R/100M 0.4A 0R3	0402
L151	3203767	Bottom	E	3	ferrite bead	240R/100M 0.4A 0R3	0402
L270	3203743	Bottom	Q	5	ferrite bead 0R03	42R/100MHz 3A	0805
L271	3640165	Bottom	Q	4	choke	10UH M 0.49A	3.0X2.8 X1.2MM
L300	3640119	Bottom	N	9	choke	22U M 1R4 0.33A	3.3X3.3X1.5
L301	3203743	Bottom	O	9	ferrite bead 0R03	42R/100MHz 3A	0805
L501	4550257	Bottom	J	5	Dir Coupler	1066+-14MHz	3.2X1.6
L600	3645305	Bottom	G	7	chip coil 12N G	Q35/250MHz	0603
L601	3645305	Bottom	G	7	chip coil 12N G	Q35/250MHz	0603
L606	3646001	Bottom	F	5	chip coil 3N3+-0N3	Q7/100M	0402
L607	3646039	Bottom	F	7	chip coil 5N6+-0N3	Q7/100M	0402
L608	3646039	Bottom	F	7	chip coil 5N6+-0N3	Q7/100M	0402

Item	Code	Side	X	Y	Description	Value	Type
L609	3646039	Bottom	F	7	chip coil 5N6+-0N3	Q7/100M	0402
L612	3646099	Bottom	F	5	chip coil 2N7+-0N3	Q29/800M	0402
L615	3646017	Bottom	G	5	chip coil 12N J	Q7/100MHz	0402
L616	3646017	Bottom	G	5	chip coil 12N J	Q7/100MHz	0402
L701	3645035	Bottom	J	8	chip coil 47N J	Q12/100MHz	0603
L702	3646077	Bottom	I	6	chip coil 82N J	Q17/300MHz	0402
L708	3645213	Bottom	J	9	chip coil 22N J	Q38/250MHz	0603
L800	3640133	Bottom	D	10	chip coil 2U7 K	Q21/1MHz	3.0X3.4
L802	3646081	Top	B	5	chip coil 68N J	Q17/300MHz	0402
L806	3646027	Bottom	D	9	chip coil 33N J	Q7/100MHz	0402
L901	3646017	Bottom	C	7	chip coil 12N J	Q7/100MHz	0402
L903	3645189	Bottom	D	6	chip coil 100N J	Q12/100MHz	0603
L906	3646415	Bottom	C	7	chip coil 19N J	Q24/250MHz	0402
L907	3646019	Bottom	D	6	chip coil 15N J	Q7/100MHz	0402
L908	3646237	Bottom	C	6	chip coil 18N J	Q7/100MHz	0402
L909	3645161	Bottom	C	5	chip coil 150N J	Q14/100MHz	0603
L910	3645011	Bottom	D	5	chip coil 68NH J	Q12/100MHz	0603
V100	4113721	Top	T	6	TVS DI 1PMT16AT3	16V 175W	PWRMITE
V307	4860343	Top	O	6	LED LWL883 White	>71MCD?10MA	0603
V308	4860343	Top	O	8	LED LWL883 White	>71MCD?10MA	0603
V309	4860343	Top	R	6	LED LWL883 White	>71MCD?10MA	0603
V312	4860343	Top	R	8	LED LWL883 White	>71MCD?10MA	0603
V313	4860343	Top	L	5	LED LWL883 White	>71MCD?10MA	0603
V314	4860343	Top	L	8	LED LWL883 White	>71MCD?10MA	0603
V317	4219937	Bottom	P	6	TRX2 UMT1/PUMT1	P40V100MA	SOT363
V318	4219937	Bottom	P	6	TRX2 UMT1/PUMT1	P40V100MA	SOT363
V319	4219937	Bottom	O	6	TRX2 UMT1/PUMT1	P40V100MA	SOT363
V601	4110945	Bottom	G	4	Cap DIX2 BBY57-05W	4P7/17P	SOT323
V701	4110921	Bottom	I	10	Cap DI BBY57-02W	1/4 16/4P	SOD523
Z300	4120031	Bottom	K	6	EMI/ESD Filt EMIF	10-1K010F1	BGA24
Z601	4511365	Bottom	E	6	Saw Filt	836.5+-12.5MHz/ 3Db	2.5X2
Z701	4511425	Bottom	I	7	Saw Filt	183.6+-0.63MHz	7X5X1.3

Item	Code	Side	X	Y	Description	Value	Type
Z802	4510329	Bottom	D	8	Isolator	824-849MHz .65Db	5X5X2
Z803	4512179	Bottom	B	8	Dupl	824-849/ 869-894 MHz	5X5X1.8
Z901	4511379	Bottom	D	6	Saw Filtr	881.5+-12.5MHz/2.5	2X2.5
N100	4341421	Bottom	Q	6	VREG 2.8V/150MA	(LP3985ITLX)	USMD5
N150	4341221	Bottom	O	7	AF AMP 0.4W/2.6V	(LM4890)	USMD9
N271	4341609	Bottom	P	6	VREG PWM/LDO	(NCP1501)	MSOP8
N302	4342141	Bottom	O	9	DC/DC Conv	LM3500 TLX-16	USMD8
N601	4370941	Bottom	F	6	Jedi TX RFIC		
N700	4370937	Bottom	I	9	Yoda DIG-V1	Metal Mod I.F IC	5X5
N800	4341487	Bottom	D	9	Vreg Elec-Adj	(CX20504)	MLF16
N803	4350405	Bottom	E	8	PW Amp CX77145	CDMA800	ORCA
N804	4219935	Bottom	E	7	TRX2+4X10K	PUMD3 N&P 50V	SOT363
N805	4120091	Bottom	C	9	ASIP STPAC01-F1	CDMA Pwr Det	BGA8
N901	4370863	Bottom	C	6	Alfred	LNA/Mixer/VQFN-24	
G500	4510435	Bottom	J	4	VCTCX0	19.2MHz+-2PPM 2.78V	2.2MA
G501	4350429	Bottom	I	4	VCO	1051-1082 MHz 2.78 V 10 MA	CDMA
D200	4370825	Bottom	M	8	UEMK W-DOG	ENA T021	TFBGA168
D400	4375019	Bottom	M	5	UPP8M V3.5	F751542I	UBGA144 C035
D450	4347029	Bottom	O	5	Combo 128M NOR + 16M	UTRA M	FBGA44
B200	4510303	Bottom	M	7	Crystal	32.768kHz+-20PPM	12.5PF
F100	5119019	Top	T	5	Sm Fuse F	1.5A 32V	0603
S302	5200025	Bottom	A	7	Sm Tact SW	Side Travel	0.2MM
X101	5460061	Bottom	T	7	Sm System Connector	14POL	
X103	5409253	Bottom	G	9	Sm Battery Conn	3POL Spr	12V 2A
X302	5469175	Top	B	8	Sm Conn	2X5F P0.5	PWB/PWB
X387	5409219	Bottom	Q	8	Sm SIM Connector	6POL	P2.54
X801	5420047	Top	B	5	Sm Coax Conn + SW	F 50R 250V	6GHz

